

Weekly News sheet for The Heathland Parishes, we are the churches of:

All Saints, Great Braxted

St Luke, Tolleshunt Knights with Tiptree

St Mary, Layer Breton with Birch

St Mary, Layer Marney

All Saints, Inworth

All Saints, Messing

To be a transforming presence in our community, open and welcoming to all and serving all



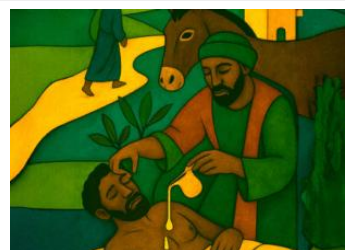
**Sunday 8th February 2026,
Second Sunday before Lent**

Today's Services & Readings

Genesis 1: 1-2:3;

Psalms 136:1-9, 23-26

Romans 8: 18-25*; Matthew 6:25-end



**Racial Justice Sunday
Love your neighbour**

St Mary, Layer Marney

9 am Holy Communion

Revd Michael Hatchett

Hymns 263, 373, 294, 397

Refreshments will be available following this service

St Luke's, Tiptree

9.30 am Parish Communion

Revd Christine Newmarch

Hymns 10, 75, 4, 355, 614, 454

All Saints', Messing

11.15 am Morning Worship

Anne Wild

Hymns 9, 62, 246, 310

Sunday Morning Resources you can find sermons, readings & intercessions for this week on the Homepage of our website, as well as our church weekday opening times: thurstablewinstreechurches.org

Please see over page for events & weekly notices for this week

To Receive the Weekly News Sheet by E-mail please contact Christine Hall the Team Administrator: thurstableteamadmin@btinternet.com If you are on the mailing list and no longer wish to receive the news sheet, please contact Christine.

**Next Sunday's Services, 15th February 2026
Sunday Next before Lent**

St Mary, Layer Marney

9 am Morning Prayer

Graham Howlett

3 pm Celebration of Marriage Service

Revd Liz Barnes

For catering please get in touch if you are hoping to be there:

layermarneychurchsec@icloud.com

St Luke's, Tiptree

9.30 am Parish Communion

Revd Liz Barnes &

Harold Toms

All Saints', Inworth

11.15 am Holy Communion

Revd Michael Hatchett

**Celebration of Marriage Service & Afternoon Tea at
St Mary's Church, Layer Marney**

We are looking forward to seeing our wedding couples and wedding blessing couples from past years, who are joining us for this Service on Sunday 15th February at 3 pm.

Ash Wednesday Services

Our joint Ash Wednesday Holy Communion, is at St Mary, Layer Breton on Wednesday 18th February at 7.30 pm. The service will be led by Revd Liz Barnes & Revd Christine Newmarch

On Thursday 19th at there will be a service of Holy Communion at 10 am at St Luke's when there will also be ashing.

Church Diary for the week Monday 9th to Saturday 14th February

Mon, 9.15 am	Parent & Toddlers, St Luke's Church Hall
Mon, 7.30 pm	Bible Study on Zoom, looking at Paul's letters to the Thessalonian; Bible study then pauses for Lent. Anyone can take part, contact w.borgartz@btinternet.com
Tue, 7.30 pm	Layer Marney PCC meeting, in the church
Tue, 2.30pm	St Luke's Finance & Stewardship meeting at Sheila's
Wed, 2 pm	Messing PCC meeting, at Victoria House
Wed, 10 am	Coffee Morning, at Messing Village Hall. Tea, coffee, cake & chat. Come along! Donations to church funds
Thu, 9 am	Morning Prayer, at St Luke's Tiptree
Thu, 10 am	Holy Communion at St Luke's, followed by coffee at the New Times – <i>people from all churches welcome</i>
Thu, 2-4 pm	Tiptree Foodbank open, at the URC Chapel Road

Diary Dates & News

Services elsewhere in our group, this Sunday, 8th February, Layer de la Haye have Holy Communion at 10.30 am led by Revd Andrew Vince; the Roman Road parishes have a joint Holy Communion Service, 10 am at Feering.

Please remember to bring last years' Palm Crosses back to church for ashing ready for Ash Wednesday, by Sunday 9th February contact Christine Hall for details thurstableteamadmin@btinternet.com

St Mary's Easthorpe, Pancake Lunch at The Cottage, Easthorpe 12.30 pm, Sunday 15th February. Please book with Sue by this Monday, 9th Feb, 01206 211294. Tickets £12.50, include savoury pancakes, pudding & glass of wine.

St Mary's Easthorpe, Coffee Mornings, please note to all our friends that there has been a change to the time of the coffee mornings to 10.30 a.m. - 12.30 pm. It is still on the third Thursday of the month, and the next one is on Thursday the 19th February. Everyone welcome.

News from Tiptree Food Bank we are in need of donations of toilet rolls; bottles of squash; soap; long-life milk; jam; long-life fruit; juice; toilet cleaner; washing up liquid; shampoo; cleaning cloths.

These can be taken to: the donation tub at ASDA, left in the yellow box just inside St Luke's Church (open 9 am to 4 pm daily), or the Foodbank at the United Reformed Church Thursdays 2-4 pm. *Thank you for your support.*



News, Reminders & Looking Ahead

Marriage Preparation Day there was a lovely buzz in the air last Saturday at St Luke's with 22 couples attending from our new Blackwater Benefice. Thank you to all who helped in any way at all with this.

There are **two Lent Courses in our new Blackwater Benefice**, both of these courses are open to all. The 'Resurrection Journeys' is the theme for the Waterside Parishes, meeting Mondays from 16th February 1-3pm at The Lighthouse Café, Tollesbury CM9 8QE. Using resources provided as part of Bishop Guli's 100 Days of Prayer, ahead of a conversation about how we sustain Ministry in the Diocese of Chelmsford beginning in the autumn. Further information may be found here: www.chelmsford.anglican.org/about-us/travelling-well-together/travelling-well-together-sustaining-ministry#Prayer

Heathland Parishes Lent Course 2026 – is using 'Christ and the Chocolaterie' a Lent Course by Hilary Brand, based on the film 'Chocolat'. We begin on Tuesday 24th February/Thursday 26th February for five weeks. All are welcome to join us for any or all sessions; attendance is free - no need to book for Tuesdays. For Thursdays please let Liz Dingle know for the lunches: emdingle@aol.com DVDs of the film are available to watch in advance (recommended), for more details - see the Lent flyers and Open Door.

Beetle Drive at St Luke's, the Friends of St Luke's have arranged a beetle drive on Saturday 21st February, 2 – 4 pm. Tickets will be £5 each, tea/coffee and biscuits included. Find out more from foslbookings@gmail.com

Confirmation many people are baptised (christened) as babies, so the Church of England provides for confirmation for teenagers and adults who wish to affirm the promises made then on their behalf and make a personal commitment to following Christ. If you are interested please see Revd Liz Barnes, Revd Christine Newmarch or anyone on the Ministry team. There will be a short course to prepare, explaining what is involved in being a disciple of Christ, and a service later in the year (not at Tiptree this year).

Get in Touch – our Contact details:

While we are in vacancy please contact Revd Liz Barnes, Associate Priest - liz_barnes@sky.com Tel: 01621 333027. Day off - Mon

News sheet & Team Administrator, Christine Hall: thurstableteamadmin@btinternet.com
Days of work: Tuesday, Wednesday & Thursday, available for phone enquiries from 10 am to 12.30 pm on the mobile: 07421 078981 (with voicemail). Available in St Luke's Church Office on Tuesday mornings by appointment only & Thursdays from 10 am to 12.30 pm. The office number is 01621 819557 (with voicemail).